



Carbon Fiber Extension For Unrestricted Imaging Capabilities In Intra- Operative Procedure's

(Surgery - Orthopedic / Neuro / Spine Traumatology /
Cardiovascular / Urology / ERCP / Gastroenterology /
Interventional Radiology etc.)

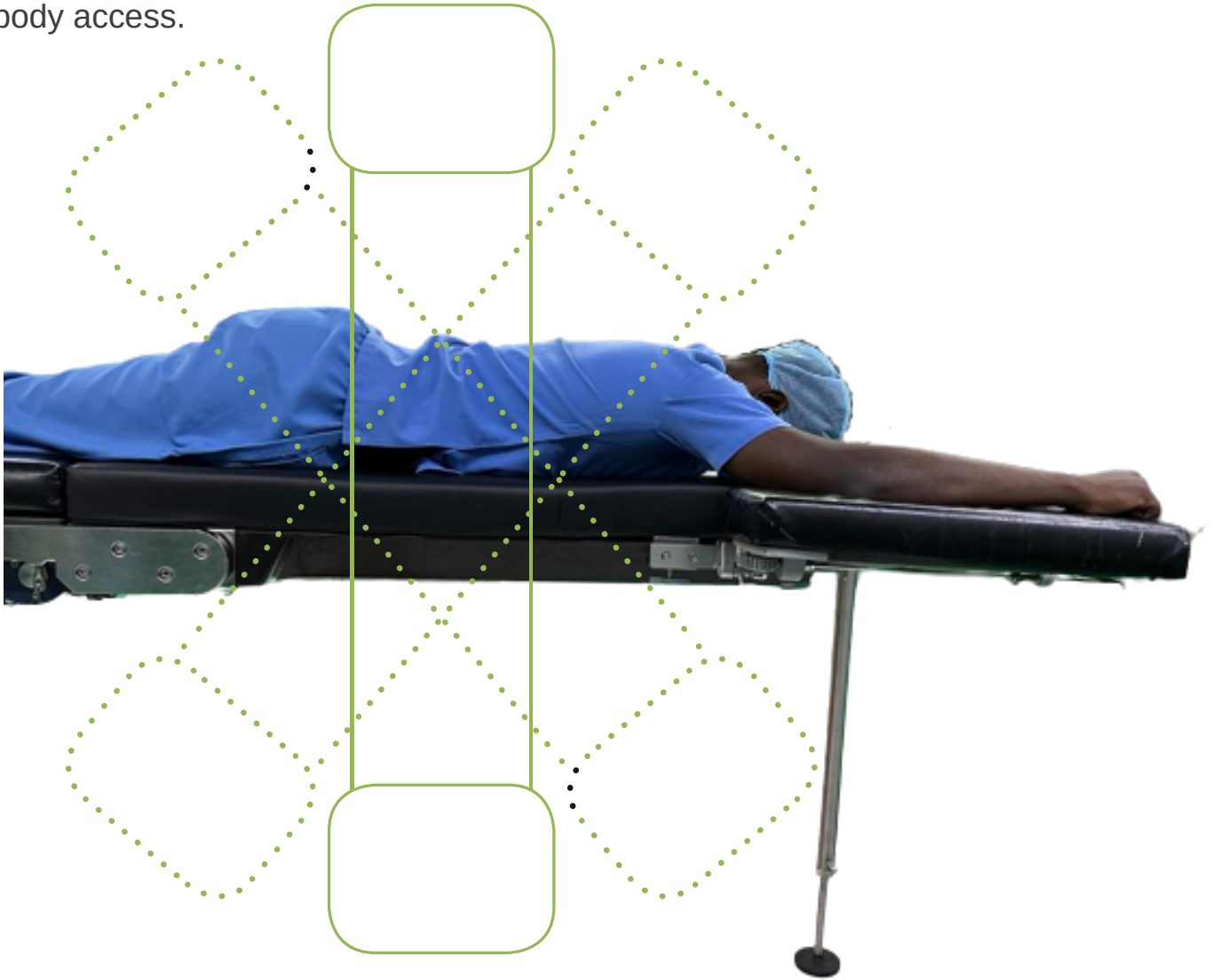
When Radiolucent Really Matters

INTEGRAY HEALTH CARE PRIVATE LIMITED

THE CARBON FIBER COMPANY

Why Carbon Fiber?

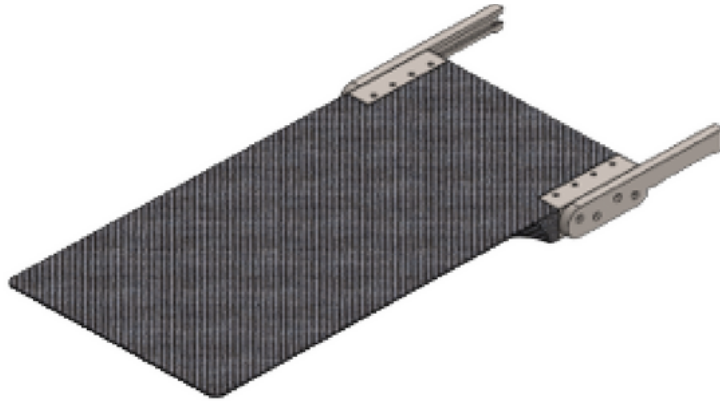
The Surgical Table is made of maximum of metals which will block much of the imaging and it interrupts the C arm machine accessibility, to over come this, the usage of Carbon Fiber makes surgical table more convenient. It makes quality success in the operating Achieve the best patient positioning and around the patient body access.



Staff can get better safety, low dose radiation with good image convenient access to all range of patients and it provides a 360° range of imaging flexibility and compatible for CT, O Arm, 3D C Arm, and 2D C Arm.

Extension Plate

Multipurpose, Carbon Fiber Extension



- **Attaches** - To the Side rail, Round/ square socket coupling, hook/ coupling point system or any customizable attaches to the table.
- **Radiolucency** - 360° Pad - 50mm / 80mm (optional) Detachable floor support for added stability if preferred.
- **Dimensions** - Standard & (L x W) customizable.
- **Capacity** in normal orientation: 353 lbs. (when complying with the conditions that apply to the operating table).
- **Type of Material** - Carbon fiber/ Stainless steel.
- **Applications** - Ortho / Traumatology, Neuro / Spine, Cardiovascular, Urology, ERCP /Gastroenterology etc.
- **Surface** - Glassy or Matte.

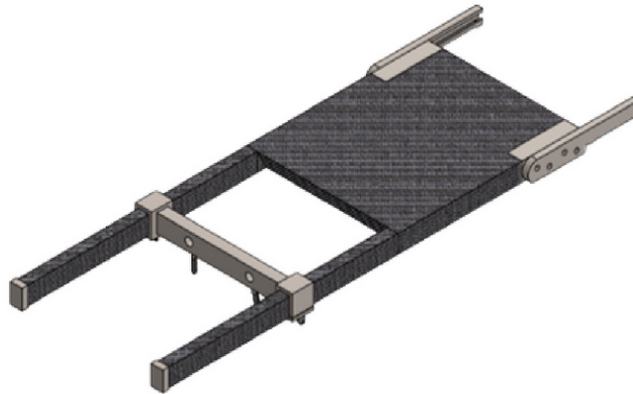
Paediatric, Carbon Fiber Extension



- **Attaches** - To the Side rail, Round/ square socket coupling, hook/ coupling point system or any customizable attaches to the table.
- **Radiolucency** - 360° Pad - 50mm / 80mm (optional) Detachable floor support for added stability if preferred.
- **Dimensions** - Standard & (L x W) customizable.
- **Capacity** in normal orientation: 353 lbs. (when complying with the conditions that apply to the operating table).
- **Type of Material** - Carbon fiber/ Stainless steel.
- **Applications** - Ortho / Traumatology, Neuro / Spine, Cardiovascular, Urology, ERCP /Gastroenterology etc.
- **Surface** - Glassy or Matte.

Cervical Device

Cervical, Carbon Fiber Extension



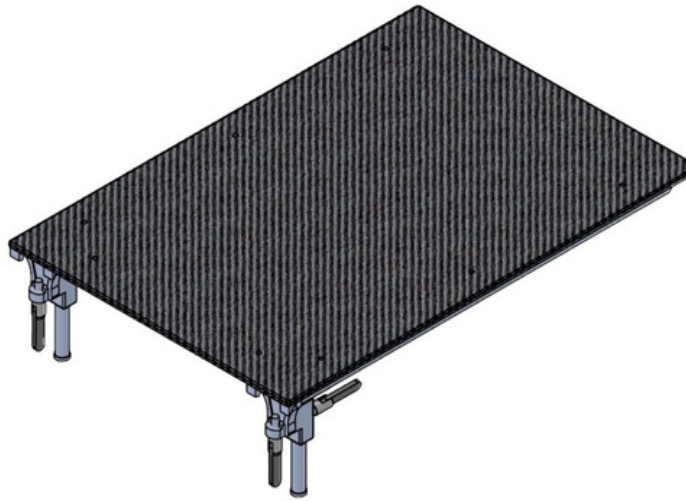
- **Attaches** - To the Side rail, Round/ square socket coupling, hook/ coupling point system or any customizable attaches to the table.
- **Radiolucency** - 360° Pad - 50mm / 80mm (optional) Detachable floor support for added stability if preferred.
- **Dimensions** - Standard & (L x W) customizable.
- **Capacity** in normal orientation: 353 lbs. (when complying with the conditions that apply to the operating table).
- **Type of Material** - Carbon fiber/ Stainless steel/ Aluminium.
- **Applications** - Cervical anterior and posterior procedure (traction provision inbuilt) Suitable for - Mayfield, Doro, Sugita, all type of standard skull clamp/horseshoe.
- **Surface** - Glassy or Matte.

Humerus Attachment Assembly



- **Radiolucency** - 360°
- **Cushion** - 50mm/80mm (Optional)
- **Dimensions** - Standard & (L x W) customizable.
- **Applications** - Ortho / Traumatology.
- **Type of Material** - Carbon fiber/ Stainless steel.
- **Surface** - Glassy or Matte.

Floating Hand Surgery Attachment

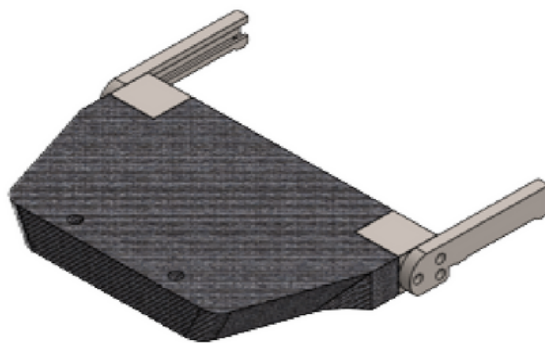


- **Radiolucency** - 360°
- **Cushion** - 50mm/80mm (Optional)
- **Dimensions** - Standard & (L x W) customizable.

- **Applications** - Ortho / Traumatology.
- **Type of Material** - Carbon fiber/ Stainless steel.
- **Surface** - Glassy or Matte.

Traction Procedure

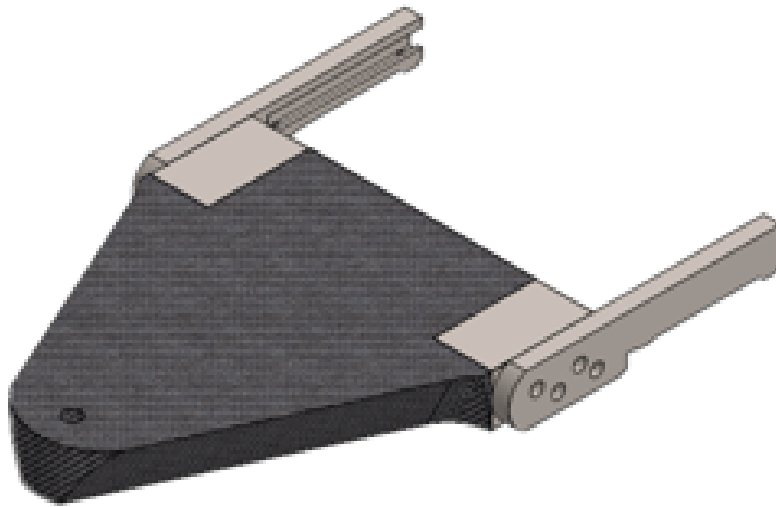
Pelvis seat, Radiolucent Extension (wide)



- **Attaches** - To the Side rail, Round/ square socket coupling, hook/ coupling point system or any customizable attaches to the table.
- **Radiolucency** - 360°
- **Dimensions** - Standard & (L x W) customizable.
- **Perineal Post Socket** - 2no's Pad - 50mm/80mm (Optional)

- **Type of Material** - Carbon fiber/ Stainless steel.
- **Applications** - Ortho/Traumatology.
- **Surface** - Glassy or Matte.

Pelvis seat, Radiolucent Extension (Narrow)



- **Attaches** - To the Side rail, Round/ square socket coupling, hook/ coupling point system or any customizable attaches to the table.
- **Radiolucency** - 360°
- **Dimensions** - Standard & (L x W) customizable.
- **Perineal Post Socket** - 1no's Pad - 50mm/80mm (Optional)
- **Type of Material** - Carbon fiber/ Stainless steel.
- **Applications** - Ortho/Traumatology.
- **Surface** - Glassy or Matte.

Perineal Post, Radiolucent Extension



- **Radiolucency** - 360°
- **Dimensions** - Standard & (L x W) customizable.
- **Cushion** - 50mm/80mm (Optional).
- **Applications** - Ortho/Traumatology.
- **Type of Material** - Carbon fiber/ Stainless steel.

Meniscus, Radiolucent Extension

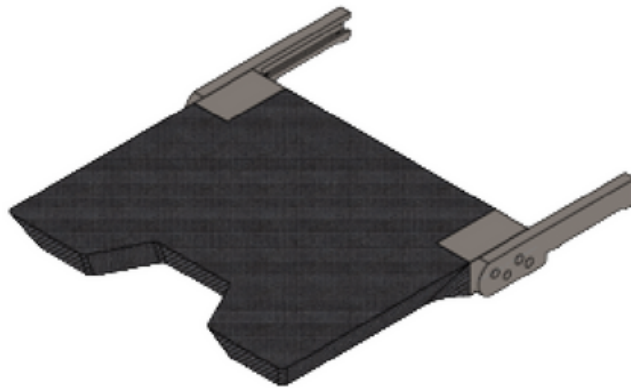


- **Radiolucency** - 360°
- **Cushion** - 50mm/80mm (Optional)
- **Dimensions** - Standard & (L x W) customizable.

- **Applications** - Ortho / Traumatology.
- **Type of Material** - Carbon fiber/ Stainless steel.

Urology/General

Urology, Radiolucent Extension

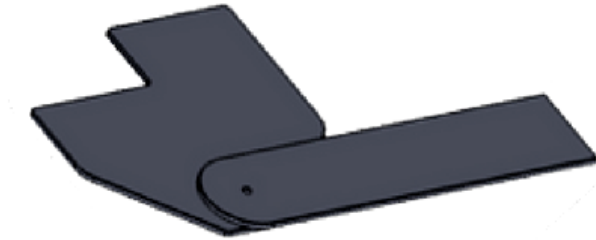


- **Attaches** - To the Side rail, Round/ square socket coupling, hook/ coupling point system or any customizable attaches to the table.
- **Radiolucency** - 360°
- **Dimensions** - Standard & (L x W) customizable.
- **Perineal Post Socket** - 1no's Pad - 50mm/80mm (Optional).

- **Type of Material** - Carbon fiber/ Stainless steel.
- **Applications** - Urology.
- **Surface** - Glassy or Matte.

Interventional Radiology

Arm board, Radiolucent Extension (under pad)



- **Attaches** - To the Sides under table pad and it held in place by patient weight.
- **Radiolucency** - 360°
- **Dimensions** - Standard & (L x W) customizable.
- **Pad** - 50mm/80mm (Optional).
- **Type of Material** - Carbon fiber/ Stainless steel.
- **Applications** - Interventional Radiology

Also, we do supply special accessories and attachments which is suits for all brand of surgical tables - Side rails clamp, Radial setting clamp, Surgical table Mattress, side rail extension, table wide extended, footrest, Body strap, arm strap, Thigh strap, wristlet strap Hand surgery table, lateral supports, shoulder support, TKR thigh support, TKR footrest, instrument try for the surgical table, Arm board, humerus attachment, Anesthesia frame etc...

WHO WE ARE

INTEGRAY, Originated from the deep-rooted values & ethics of Biomedical engineers with a vast experience around 15 years in Sales, Service, Installation & Regulatory affairs in various clinical domains like Radiology, Oncology, Cardiology, OR & ICU solutions. Integray serves the precise, accurate & sophisticated machines to enhance the medical services by facilitating the customer to accomplish with unique and innovative solutions.



Vision

To emerge as an Icon in the assortment of Medical devices in Clinical Domains.

Mission

To provide transparent, High Quality Medical Machinery whilst operating client centric to achieve Customer satisfaction through affordable prices.

Services

Integray health care strives towards customer satisfaction with set of algorithms. Our team provides customary installation, service and maintenance to provide complete solutions for all requisite customer needs like room layout planning, site construction, obtaining necessary regulatory approvals etc. and also provide unparalleled support for turnkey works.

Contact Details

INTEGRAY HEALTH CARE PVT LTD.,
B2,Plot No. 130, South End Road,
Thiruvengada Nagar,
Ambattur, Chennai - 600 053.

Talk to us :

 +91-9944141408
 sss@integray.in
 WWW.INTEGRAY.IN



Base Carbon Fiber Spine System

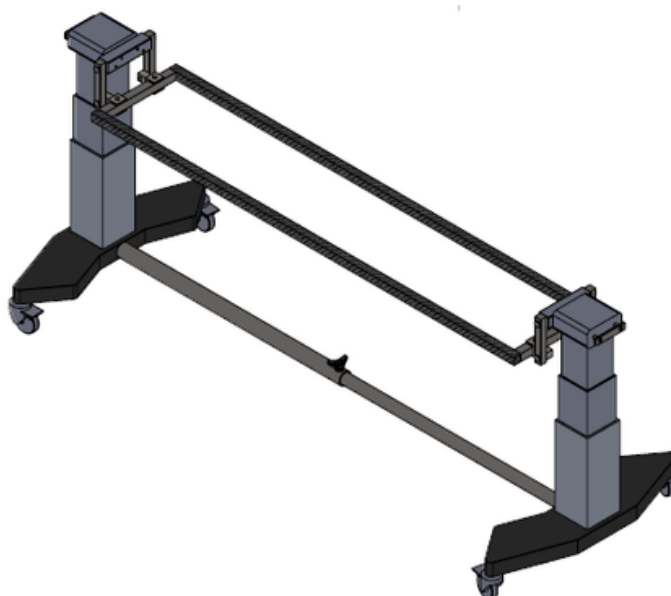
When Radiolucent Really Matters

**INTEGRAY HEALTH CARE
PRIVATE LIMITED**

True Partner in Health Care Solutions

I Base Carbon Fiber Spine system

Carbon Fiber Spine Rail Top



Technical Specification:

Patient Weight Capacity - 227 kg (even load)

Retractable 'I' Base (Length) - 1750 mm to 275 mm (± 10 mm)

Retractable 'I' Base (Width) - 830mm (± 10 mm)

Radiolucent Spinal rail top width x length
- 430mm x 2130 (± 10 mm)

Emergency safety circuit - Enabled

Table Up/down - 850mm to 1200mm Electronically adjustable (± 10 mm)

Trendelenburg / Reverse Trendelenburg - 10° Electronically adjustable ($\pm 2^\circ$)

Casters - 4 no's (With brake)


Hand control (Remote) - Up/Down and Trendelenburg/Reverse Trendelenburg

**The specification is subject to change without any prior notice
Suitable for Navigation system and Allen spine frame accessories are compatible with this system.

Contact Details

INTEGRAY HEALTH CARE PVT LTD.,
B2,Plot No. 130, South End Road,
Thiruvengada Nagar,
Ambattur, Chennai - 600 053.

Talk to us :

 +91-9944141408

 sss@integrays.in

 WWW.INTEGRAY.IN